



EUROPE QUADRO
OFFICE FURNITURE



A premium model range with all necessary furniture elements, a choice of updated decors and the colors of metal bases allow you to create an extremely functional, yet stylish workspace.

The mobile cabinets are of a smaller size with three drawers and a central lock for a lighter feeling.



Building workstations is both efficient and economical with the modular metal base for 2 or 4 workplaces.

The C-shaped metal base with a square cross-section of 1.6"x1.6" (40x40 mm) with a polymer coating is offered in three base finishes: white, silver metallic and anthracite.



Metal bases | 1.6"x1.6" (40x40 mm)



Silver metallic



White



Anthracite

Divider panel holders "pelican"



Silver metallic



White



Anthracite

Modesty panel holders



Silver metallic



White



Anthracite

Decors | MFC



White premium



Acacia light

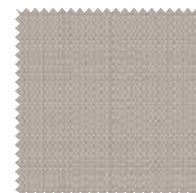


Driftwood



Grey
(for wardrobe structures with a back panel of 0.12" (3 mm))

Textile



Flash 20

Design features



Silver grey cable organizer for freestanding worktop tables.



Comfortable metal handle in satin chrome finish.



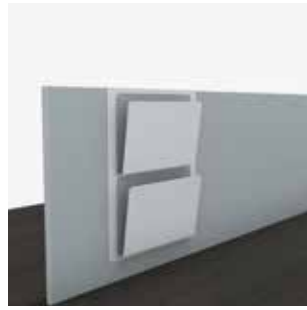
Mobile cabinet with three drawers and a central lock.



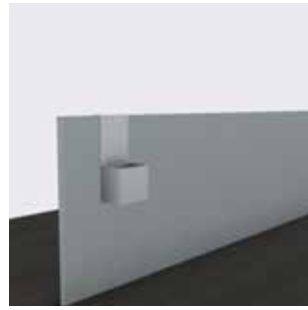
The elements of the EUROPE QUADRO collection, including decorative colored lining of table partitions, if necessary, may be supplemented by some elements of the wider EUROPE collection.

ACCESSORIES |

METAL MOUNTED ELEMENTS



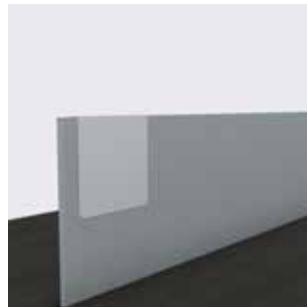
Folder tray
W x H
11.8" x 14.4"
(300 x 365 mm)



Pencil tray
W x D x H
3.9" x 2.4" x 7.1"
(100 x 61 x 180 mm)



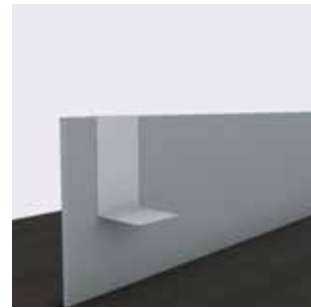
Hook
W x D x H
1.2" x 0.9" x 3.1"
(30 x 23 x 80 mm)



Magnetic board
W x H
7.1" x 7.1"
(180 x 180 mm)

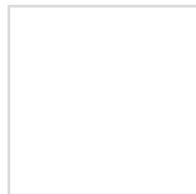


Letter/A4 paper holder
W x D x H
5.9" x 7.9" x 9.8"
(150 x 200 x 250 mm)



Diary shelf
W x D x H
4.7" x 4.7" x 7.1"
(120 x 120 x 180 mm)

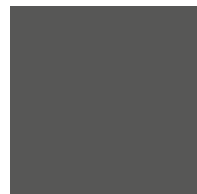
Decors



White

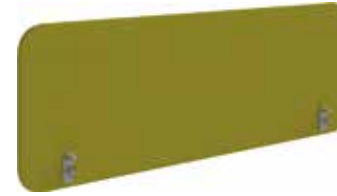


Silver metallic



Anthracite

Desktop partitions



Without decorative stitching
(only made from Flash textile)
H 19.8" (504 mm), W 38.6" (980 mm), 46.5" (1180 mm), 54.3" (1380 mm), 62.2" (1580 mm), 70.1" (1780 mm)



With decorative stitching
(only made from Sherst textile)
H 19.8" (504 mm), W 38.6" (980 mm), 46.5" (1180 mm), 54.3" (1380 mm), 62.2" (1580 mm), 70.1" (1780 mm)

Floor partitions



Mobile, modular, with zipper – «accordion»
(per module)
H 45.3" (1150 mm), 63.0" (1600 mm)
W 23.6" (600 mm), 31.5" (800 mm)

Base and fixture finishings:



White



Silver metallic



Anthracite

Types and colors of fabrics used:

Sherst:



Sherst 01



Sherst 06



Sherst 07



Sherst 08



Sherst 12

Flash:



Flash 08



Flash 09



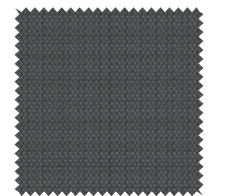
Flash 10



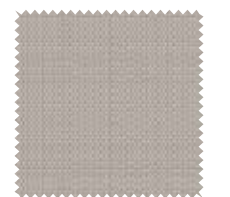
Flash 12



Flash 14



Flash 20



Flash 20



GVA Interiors, Inc.
2771 Bristol Circle
Oakville, Ontario L6H 6X5 Canada
Office: +1 905-338-0000
Toll Free: +1 888-901-3090
gvainteriors.com